

# INSTALLATION INSTRUCTIONS



80-10002

EXHAUST SYSTEM, CAT BACK

FORD F-150, 2.7L/3.3L/3.5L /5.0L  
2015-UP



## PARTS INCLUDED

Part Number	Description	Qty
057-1001	Pipe, Resonator Delete	1
057-1002	Pipe, Extension	1
027-1001	Muffler Assembly	1
060-1001	Pipe, Tail	1
010-1002	Hardware Kit	1
034-6930	End Tip, Slash	1

## TOOLS REQUIRED

Description
3/8" Drive Ratchet
3/8" Drive Extension
10mm Socket
13mm Socket
15mm Socket

Description
9/16" Socket
9/16" Box Wrench
Torque Wrench
Band Saw, Hack Saw, or Cut-Off Wheel
Spray Lubricant (Silicone, WD40, or similar)

**CAUTION: PLEASE READ CAREFULLY BEFORE PROCEEDING!**

*While our exhaust systems are designed to be installed by the novice enthusiast, they do require a moderate amount of mechanical aptitude and a thorough understanding of safety practices. Failure to follow these instructions or not using the provided components could cause premature product failure, vehicle damage, personal injury or death. If after reading these instructions you do not feel comfortable installing this product please contact a competent installer near you.*

**WARNING: FOR YOUR SAFETY, PLEASE FOLLOW THESE INSTRUCTIONS CAREFULLY.**

1. ALWAYS WEAR SAFETY GLASSES FOR EYE PROTECTION.
2. DO NOT WEAR LOOSE CLOTHING OR JEWELRY THAT CAN GET CAUGHT IN ROTATING PARTS.
3. KEEP HANDS AND OTHER BODY PARTS AWAY FROM MOVING ENGINE AND CHASSIS COMPONENTS.
4. THE VEHICLE MUST BE PARKED ON A CLEAN AND LEVEL WORK SURFACE.
5. MAKE SURE THE IGNITION SWITCH IS IN THE "OFF" POSITION.
6. MAKE SURE YOUR VEHICLE IS IN PARK WITH THE EMERGENCY BRAKE SET.
7. WHEEL CHOCKS MUST BE SET IN THE FRONT AND REAR OF ONE WHEEL TO PREVENT UNEXPECTED VEHICLE MOVEMENT.
8. MAKE SURE THE ENGINE, COOLING SYSTEM, BRAKES AND EXHAUST ARE COOL BEFORE WORKING ON THE VEHICLE.
9. IF USING A FLOOR JACK, APPROPRIATELY RATED JACK STANDS MUST BE USED.
10. IF USING A LIFT, CONSULT YOUR VEHICLE MANUAL FOR PROPER LIFTING SPECIFICATIONS.
11. DO NOT SMOKE OR USE AN OPEN FLAME NEAR OR AROUND THE FUEL SYSTEM.
12. ONLY OPERATE THE ENGINE IN A WELL VENTILATED AREA TO PREVENT EXPOSURE TO CARBON MONOXIDE.

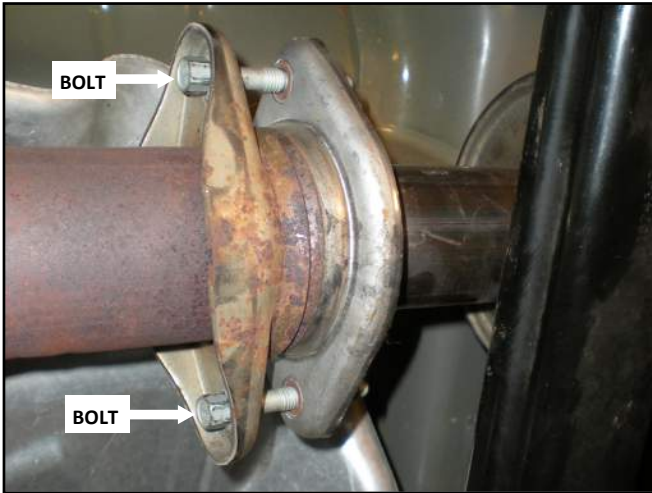
**BEFORE REMOVING YOUR STOCK EXHAUST SYSTEM PLEASE COMPLETE THE FOLLOWING TASKS.**

1. MAKE SURE THIS SYSTEM IS THE APPROPRIATE SYSTEM LISTED BY SUPERTRAPP TO FIT YOUR VEHICLE. AND, THAT IT WILL NOT INTERFERE WITH ANY PREVIOUS MODIFICATIONS MADE TO YOUR VEHICLE.
2. THOROUGHLY READ AND UNDERSTAND THESE INSTRUCTIONS.
3. MAKE SURE ALL SUPPLIED COMPONENTS ARE INCLUDED IN THE KIT AND NONE WERE DAMAGED DURING SHIPPING. IF PARTS ARE MISSING OR DAMAGED, CONTACT THE DEALER WHERE PURCHASED.
4. MAKE SURE ALL SUPPLIED COMPONENTS FIT TOGETHER PROPERLY BEFORE PROCEEDING.

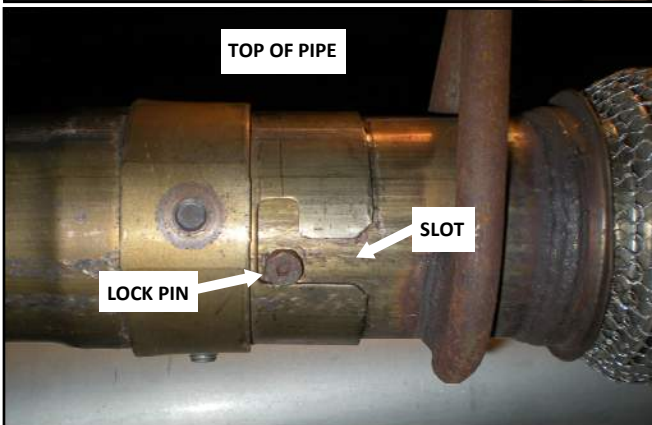
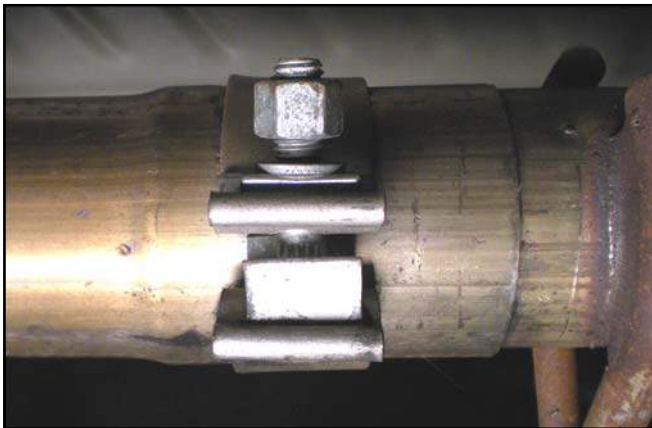
**FOR WARRANTY INFORMATION VISIT [WWW.SUPERTRAPP.COM](http://WWW.SUPERTRAPP.COM)**

## STOCK EXHAUST SYSTEM REMOVAL

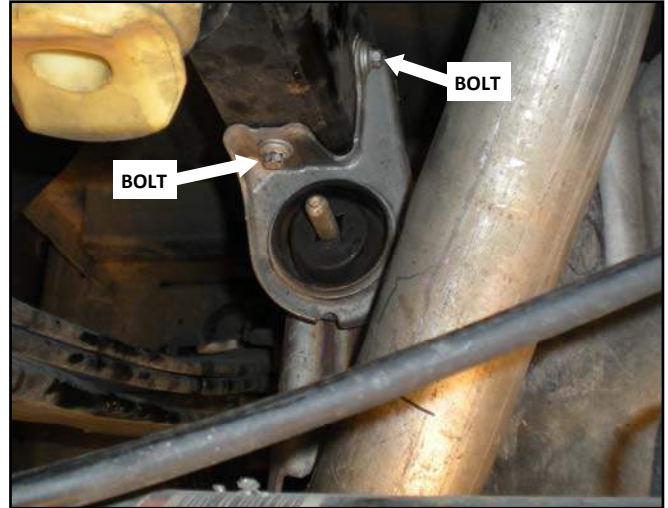
1. Using a 13mm socket, loosen the two bolts holding the resonator pipe flange to the catalyst pipe flange. **DO NOT REMOVE.**



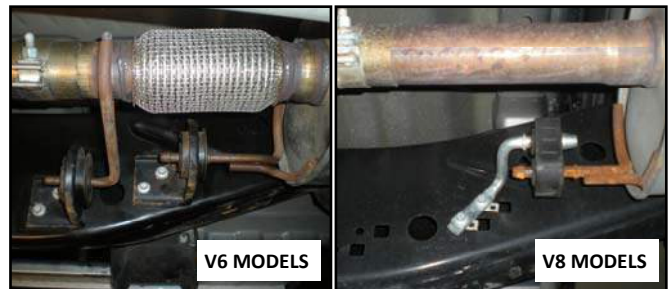
2. Using a 15mm socket, loosen the clamp on the inlet of the muffler. Rotate the resonator pipe clockwise to align the muffler lock pin with the slot in the resonator pipe outlet (See Photo).



3. Using a 10mm socket, remove the two mount bolts holding the rear tailpipe hanger to the frame. Retain these bolts and hanger for the new system installation.

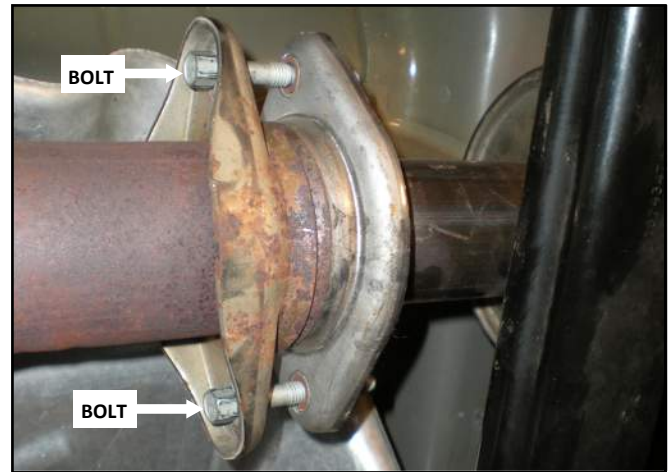


4. Spray lubricant on the rubber isolators in the mounts to ease removal. **CAREFULLY** pull the muffler/tail pipe assembly back out of the hangers on the frame. Once the assembly is clear of the hangers, remove the assembly from under the vehicle and set aside.



- Using a 13mm socket, remove the two bolts holding the resonator pipe flange to the catalyst pipe flange. Pull the resonator pipe free of the catalyst pipe, remove from under the vehicle and set aside.

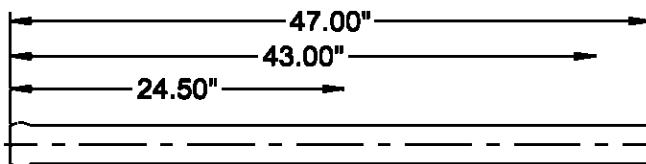
⇒ Now that the stock system has been removed, clear the area around and under the vehicle and prepare to install your new Supertrapp system.



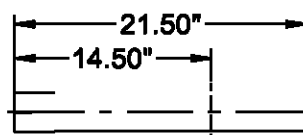
## SUPERTRAPP SYSTEM INSTALLATION

- Since our exhaust system is designed to fit multiple chassis configurations, some pipes supplied may or may not be used or may require cutting to length. Reference the chart and drawing below to determine the specific configuration for your vehicle. Cut distances should be measured as indicated in drawing below.
- Install the supplied flange on the resonator delete pipe and slide it up to the bulge at the inlet. Fit the bulged end of the pipe into the flare on the outlet of the stock exhaust pipe and support the pipe in place. Using a 9/16" socket and box wrench, install the supplied 3/8" x 2.75" bolts with flat washers and lock nuts. (*One washer should be under the bolt head and the second under the nut.*) DO NOT TIGHTEN.

WHEEL BASE/ CONFIGURATION	RESONATOR DELETE PIPE	EXTENSION PIPE
122.4" REG. CAB, 6.5' BOX	CUT TO 24.5"	NOT USED
141.1" REG. CAB, 8.5' BOX	CUT TO 43.0"	NOT USED
145.0" SUPERCAB, 6.5' BOX SUPERCREW, 5.5' BOX	USE AS SUPPLIED	NOT USED
156.8" SUPERCREW, 6.5' BOX	USE AS SUPPLIED	CUT TO 14.5"
163.7" SUPERCAB, 8.0' BOX	USE AS SUPPLIED	USE AS SUPPLIED



RESONATOR  
DELETE PIPE



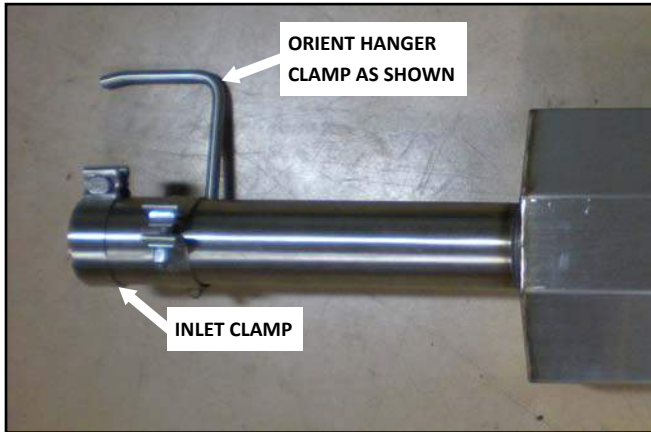
EXTENSION  
PIPE



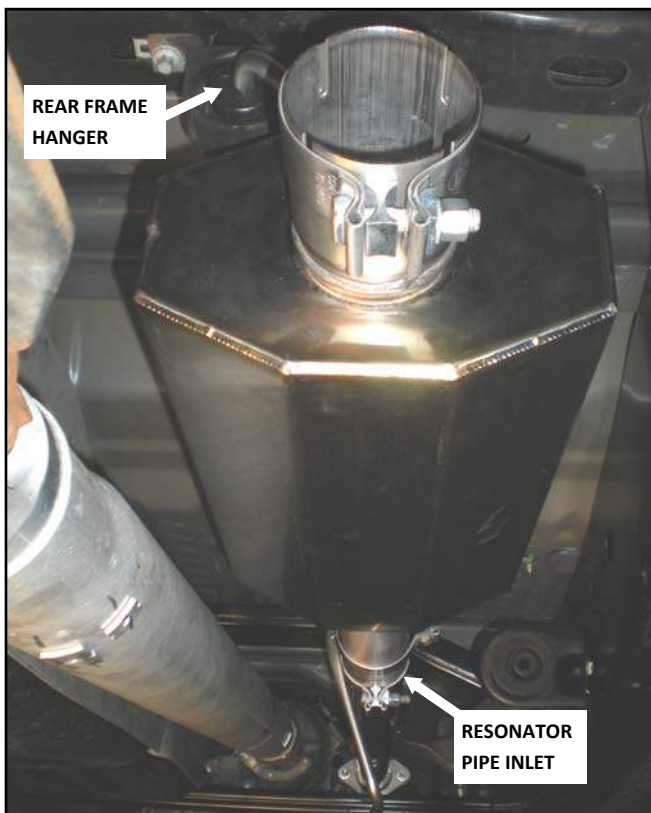
- FOR APPLICATIONS USING THE SECONDARY EXTENSION PIPE:** Install a clamp from the hardware kit on the slotted end of the pipe. Slide the extension pipe onto the outlet the resonator pipe until fully seated. Position the clamp so it covers the base of the slots completely and torque the clamp to 40-45 ft-lbs.



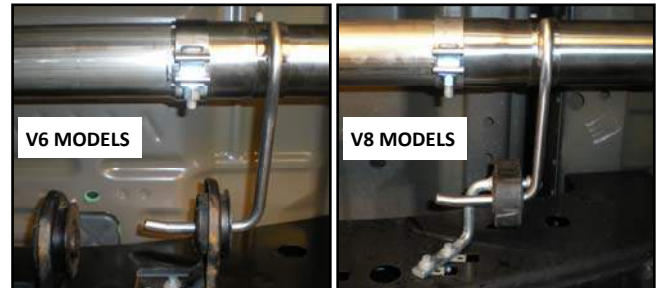
4. Install the hanger clamp from the hardware kit onto the inlet end of the muffler. Orient the hanger as shown below and slide behind the bulge in the inlet. Install a clamp from the hardware kit on the inlet of the muffler. Leave the hanger and clamp loose at this time.



5. Install muffler on vehicle. Slide the rear muffler hanger hook into the frame hanger on the vehicle and muffler inlet onto the outlet of the resonator pipe. Push the muffler forward until fully seated on the resonator pipe outlet.



6. Slide the hook of the hanger clamp into the rear frame hanger on the vehicle. Push the hanger forward to the bend in the hook. Align the muffler and resonator pipe and torque the hanger clamp to 40-45 ft.-lbs. Position the inlet clamp so it covers the base of the slots in the muffler inlet completely and torque clamp to 40-45 ft.-lbs.



7. Tighten the two 3/8" bolts at the front flange evenly to 8-10 ft.-lbs. DO NOT over tighten to the point of bending the flange. (These have self-locking nuts and do not need to be overly tightened).



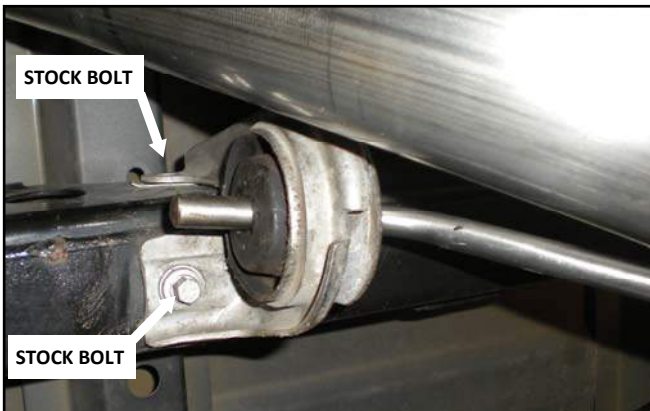
8. Slide the stock tail pipe hanger onto the hanger hook on the new tail pipe as shown.



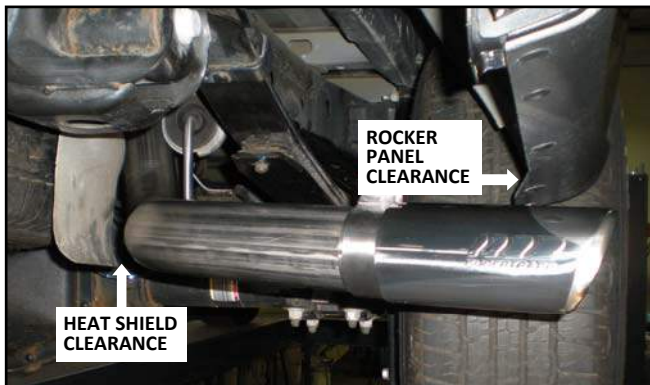
9. Install a clamp from the hardware kit on the outlet of the muffler. DO NOT TIGHTEN.



10. Snake the tail pipe over the axle from the back of the vehicle and insert into the outlet of the muffler. Pivot the tail pipe up to align the stock hanger with the mount holes in the frame. Using a 10mm socket, install the stock mount bolts and tighten.



11. Slide the end tip, with clamp, onto the outlet of the tailpipe. Rotate the tail pipe up and align so the tip is a minimum 1.50" from the rocker panel and the tailpipe is a minimum .50" away from the spare tire heat shield. Support in place.



12. Position the clamp on the muffler outlet so it covers the base of the slots completely and torque clamp to 40-45 ft.-lbs.



13. Align and position the end tip so it extends past the outside surface of the rocker panel as shown below. Align and torque the clamp to 40-45 ft.-lbs.



14. CONGRATULATIONS! You have completed the installation of your new Supertrapp exhaust system. You can start your engine and check for exhaust leaks at this time. If a leak is present, check hardware tightness and clamp position and adjust accordingly. Recheck the system after about 50 miles of driving distance.